

Photo #3 – Existing duct and proposed conduit run at mezzanine level

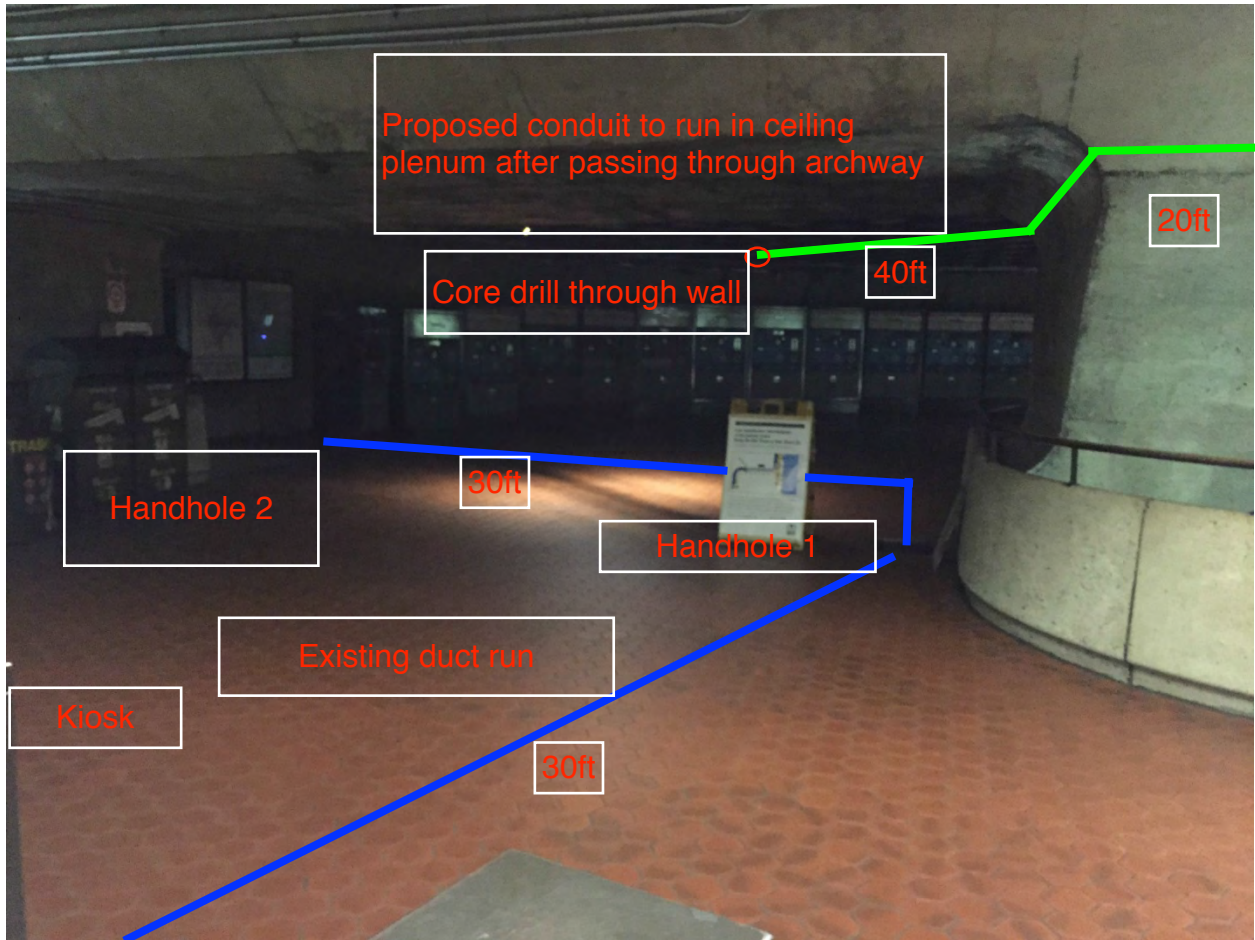


Photo #4 – Proposed conduit run across passageway ceiling plenum

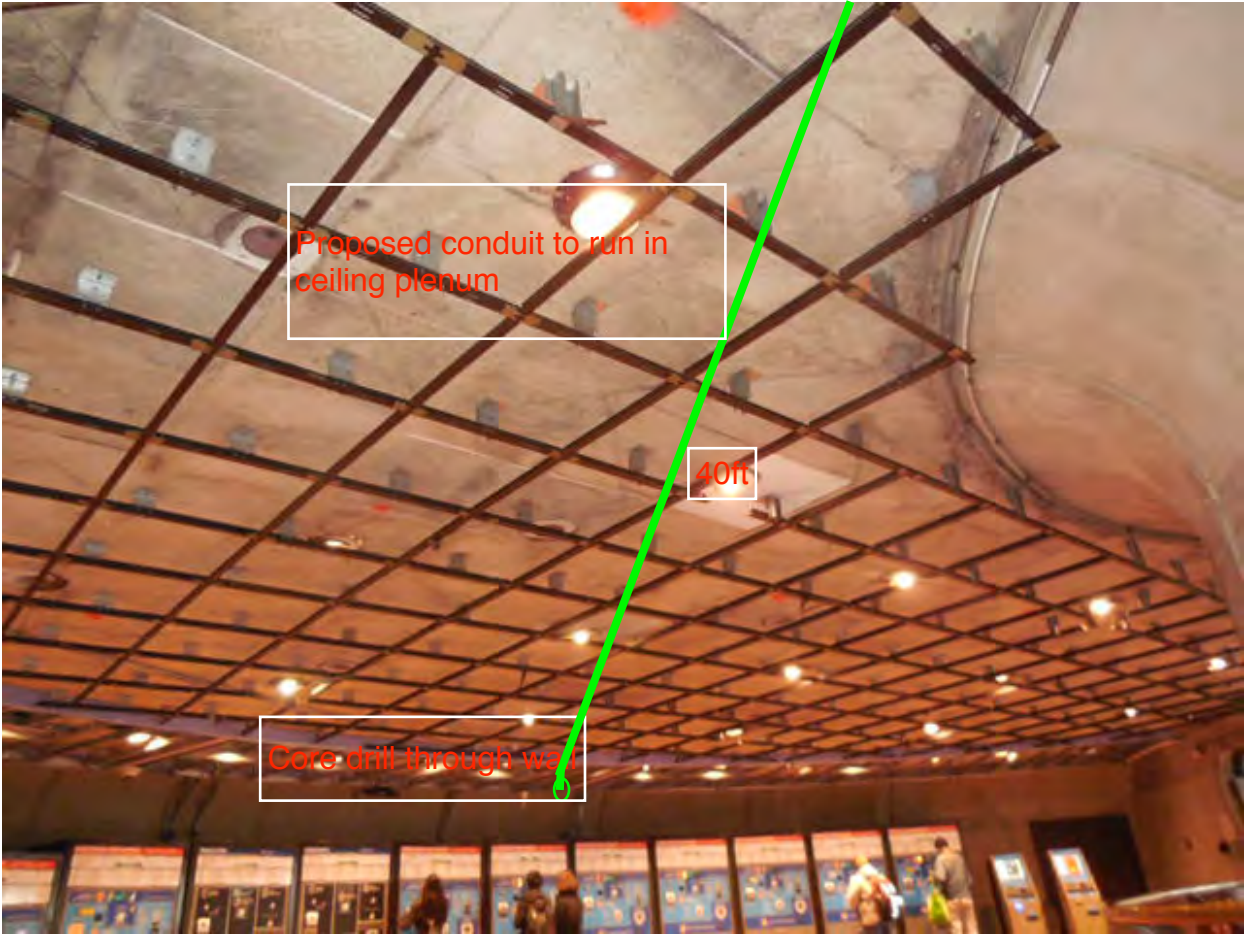
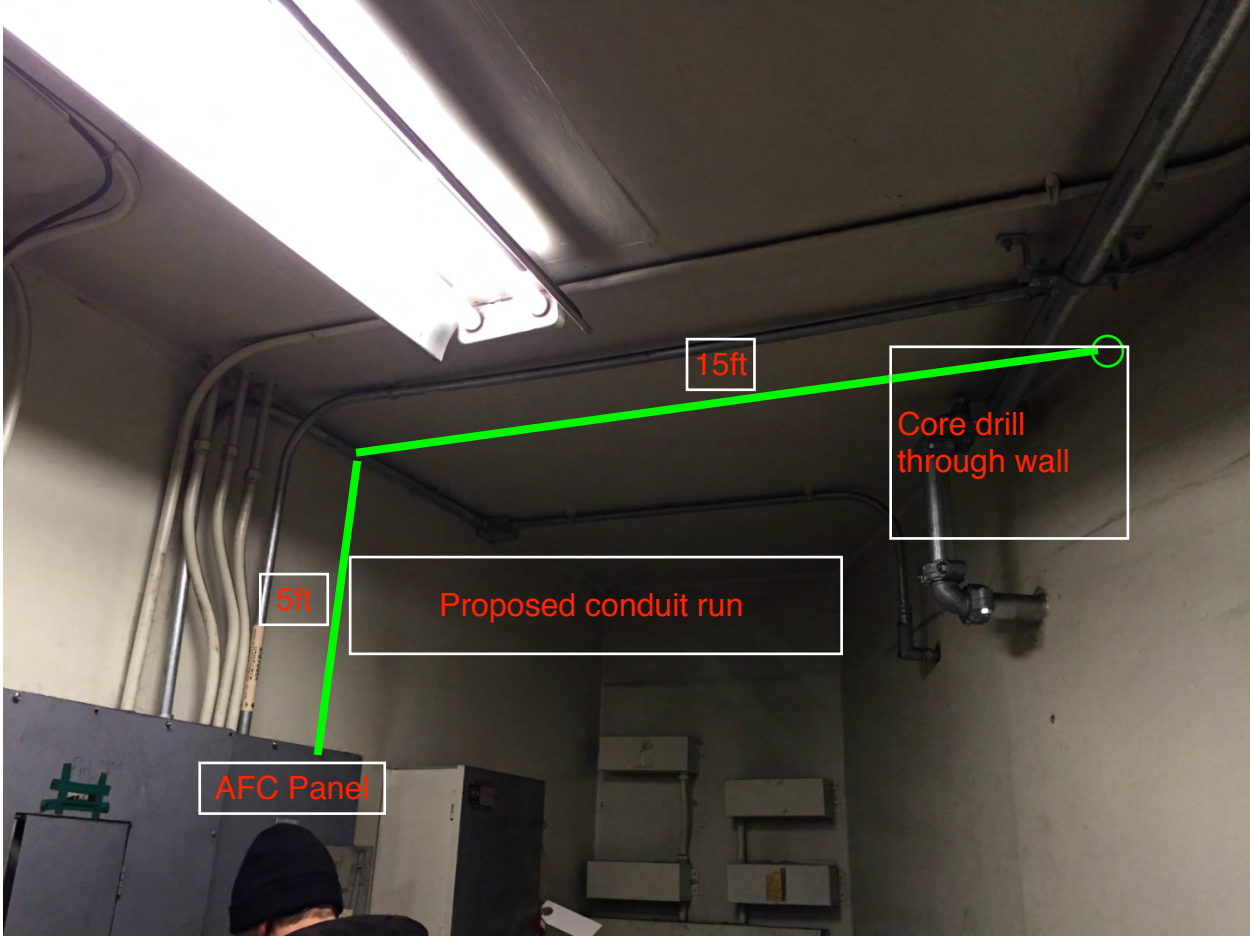


Photo #5 – Proposed conduit run across Room C204 and down into AFC Panel



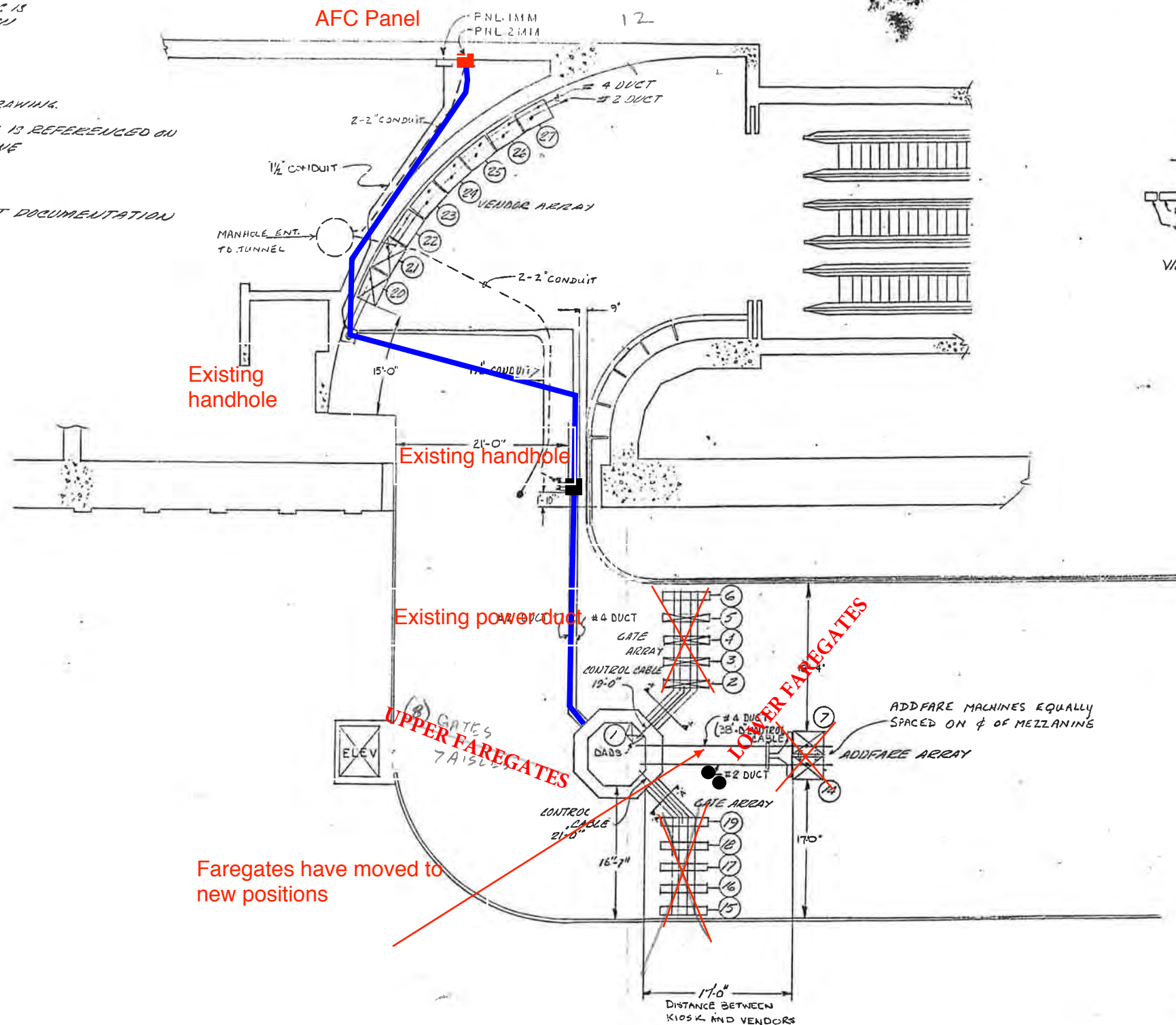
1. INFORMATION CONCERNING DUCTS AND CONDUITS IS BASED ON INFORMATION SUPPLIED TO CUBIC WESTERN DATA BY UMAPA/DEMENTE.

2. TOTAL MACHINE INVENTORY IS DEPICTED ON THIS DRAWING.

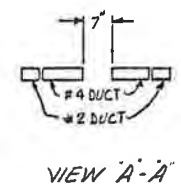
3. THE MINIMUM OPERATIONAL MACHINE INVENTORY IS REFERENCED ON THIS DRAWING BY THE X DRAWN THRU THE MACHINE.

4. FOR AS BUILT CONDITIONS SEE SHEET 2.

5. FOR REFERENCE DRAWINGS USED SEE SUPPORT DOCUMENTATION PACKAGE FOR THIS MEZZANINE.



REVISIONS		
DESCRIPTION	DATE	APVD
AS BUILT DRAWING REVISION-A	7-13-77	CB



Existing handhole

Existing handhole

Existing power duct

~~UPPER FAREGATES~~

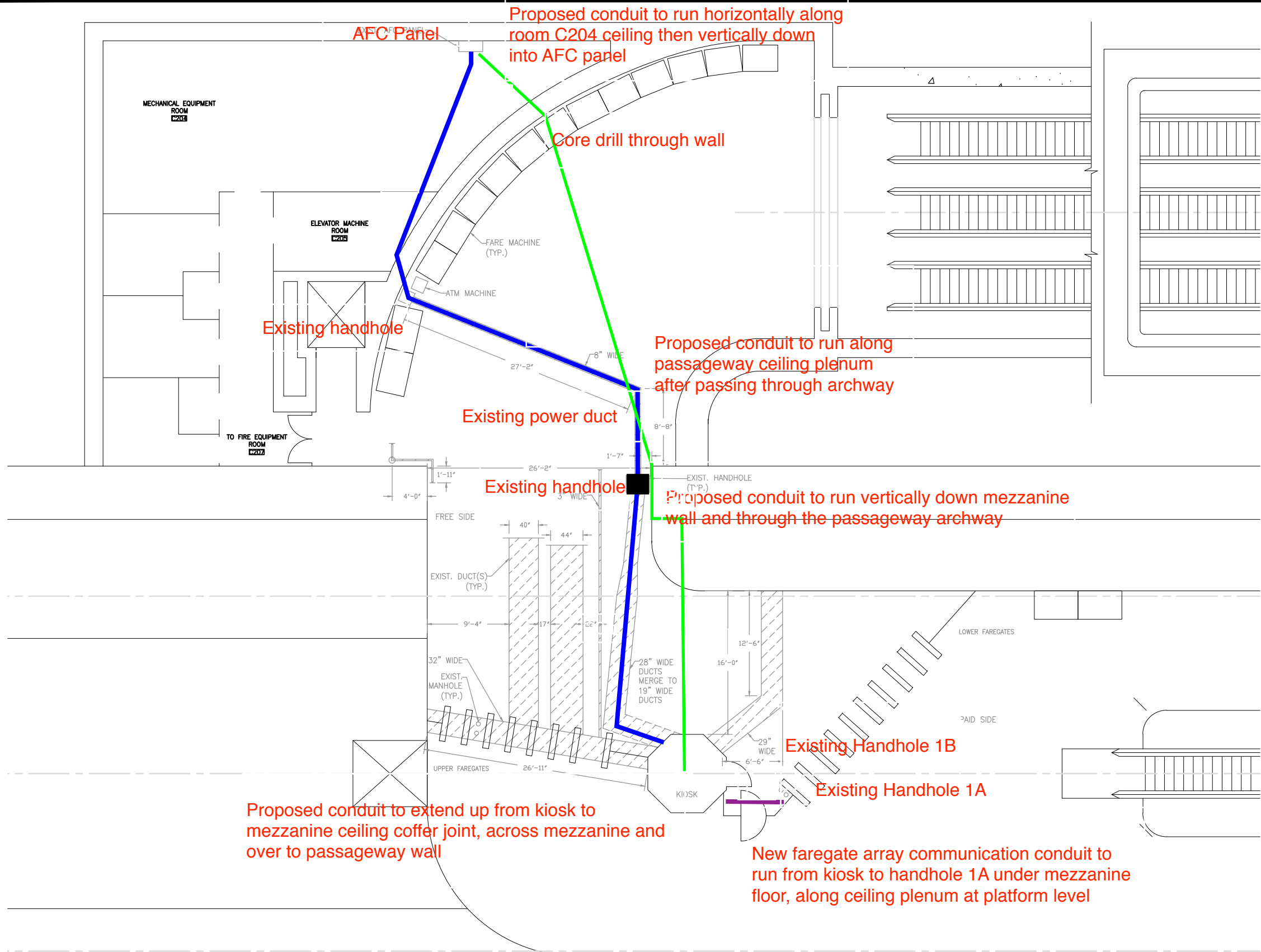
~~LOWER FAREGATES~~

Faregates have moved to new positions

-1 INSTALLATION PLAN
(AS BUILT CONDITION)

WASHINGTON METROPOLITAN
AREA TRANSIT AUTHORITY

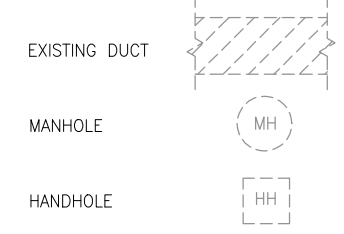
CONTRACT NUMBER 2 = 007A		CUBIC WESTERN DATA A subsidiary of Cubic Corporation 560 KEARNY MESA ROAD • POST OFFICE BOX 80787 • SAN DIEGO, CA 92138	
REL		FOGGY BOTTOM STATION	
ENGRG		AFC MACHINES	
DESIGN		DRAWING NUMBER 926-0378	
CHECK		REL 40	
DRAWN		SCALE: 1/8" = 1'	
DESIGN ACTIVITY APPROVAL APPROVED		SHEET 1 OF 1	



PLAN NOTES:

1. DIMENSIONS ARE IN FEET AND INCHES.
2. DIMENSIONS ARE FOR REFERENCE ONLY.
3. EXISTING IN-FLOOR DUCTS/CONDUITS WERE IDENTIFIED USING A PORTABLE GPR SCANNING DEVICE.
4. THE SCANNING COVERAGE IS LIMITED TO THE MEZZANINE FLOOR ONLY.
5. GPR SCANNING HAS THE FOLLOWING LIMITATIONS: (i) 12 INCHES VISIBLE SCANNING DEPTH; (ii) VISIBILITY BEYOND CONGESTED OR NEAR SURFACE REINFORCEMENT LAYERS; (iii) DETECTION OF PVC AND OTHER NON-METALLIC OBJECTS (iv) DETERMINATION OF SIZE AND EXTENTS OF SUBSURFACE ANOMALIES SUCH AS SLAB VOIDS OR REBAR SIZES; AND (v) VISIBILITY WHEN VARIABLE MOISTURE CONDITIONS EXIST IN THE SUBSTRATE.

LEGEND:



1
E-100
FOGGY BOTTOM STATION
SCALE: NOT TO SCALE

CONTRACT NO.
XXXXXX

DESIGNED	B. WILLIAMS	03-15
DRAWN	B. WILLIAMS	03-15
CHECKED	M. BUTLER	03-15
APPROVED		

REFERENCE DRAWINGS	
NUMBER	DESCRIPTION

REVISIONS	
DATE	DESCRIPTION

WASHINGTON METROPOLITAN AREA TRANSIT AUTHORITY
 DEPARTMENT OF TRANSIT INFRASTRUCTURE AND ENGINEERING SERVICES
 OFFICE OF INFRASTRUCTURE RENEWAL PROGRAM
GFP A Gannett Fleming/Parsons JOINT VENTURE
 APPROVED _____ SUBMITTED _____ PROJECT MANAGER

15-NEPP-01
 IN - FLOOR DUCT INSPECTIONS
 C04 Foggy Bottom
 PROPOSED POWER CONDUIT RUN
 SCALE: NOT TO SCALE
 DRAWING NO. C04-E-100
 XXX